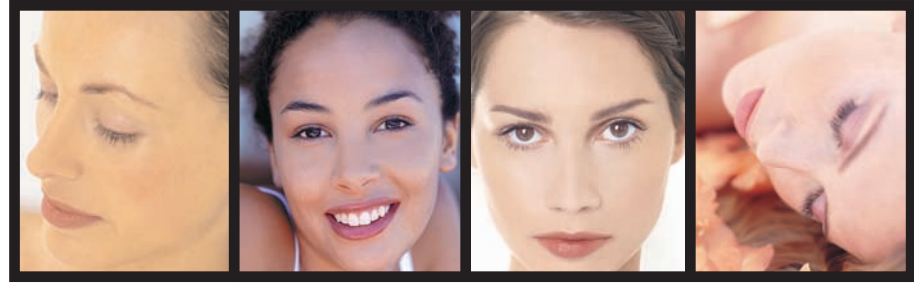


Youngevity[®] Mineral Makeup[™] Collection[™]

Endorsed by Dr. Melinda Silva, MD

The Power of Makeup



LIGHT 1 #163014	 <i>Charming[™]</i> - A more pink shade for light-medium skin tones.	MEDIUM 2 #163020	 <i>Exquisite[™]</i> - A medium-dark caramel toned foundation, excellent for Indian, Malaysian, Latina, and Thai women.
	 <i>Sophisticated[™]</i> - A pink-undertone shade created for the very lightest of complexions.		 <i>Seductive[™]</i> - A foundation with deep caramel and red tones, this shade falls in the middle of the darker skin tone range.
LIGHT 2 #163016	 <i>Sensual[™]</i> - A neutral shade for light complexions.	DARK 1 #163022	 <i>Magnificent[™]</i> - A classic latté tone that primarily accentuates red undertones in African-American skin.
	 <i>Beautiful[™]</i> - A classic neutral shade for medium-light complexions.		 <i>Dazzling[™]</i> - A classic espresso for the darkest complexions.
MEDIUM 1 #163018	 <i>Glamorous[™]</i> - Perfect for most Caucasians who maintain a tan, this foundation has a warm bronze base with complementing red tones.	DARK 2 #163024	 <i>Vivacious[™]</i> - For darker skin tones that have more blue and red undertones. This is our second darkest shade available.
	 <i>Gorgeous[™]</i> - A medium-dark tone for Latin, Indian, African-American, Filipino, and Southeast Asian women.		 <i>Captivating[™]</i> - A rich, classic, brown shade with balanced undertones.

We can customize a kit for you—Choose any two shades above! #163029
 (Includes the Angel Face[™] and Lovely Glow[™] or Blissful[™] and Passionate[™] blush combination, depending on foundation color choices.)

How to Select a Color...

To color-match your skin, apply a light dusting of Youngevity[®] Mineral Makeup to your jaw line. Use a high quality makeup brush—not a sponge or your fingers! You should not see a line—in fact, you should not be able to see the makeup at all. It should blend with your natural skin tone. If it does, you've selected the right color!

Each Kit Also Includes:

- Lovely Glow[™] Bronzer and Angel Face[™] Setting Powder in the three lighter kits or two blushes in the three darker kits.
- NuVANTE[™] Nu C—Waterless Vitamin C[™]
- Invision[™] Skin Enhancer[™]
- 3 Brushes—Ultimate Concealer, Flawless Face, & Kabuki



For more information, contact

INDEPENDENT ASSOCIATE